

Electron Beam Evaporator System



Specification

Chamber



Main Chamber : Rectangular Type

Loading Chamber : Circular or Rectangular

Cassette Chamber (Optional)

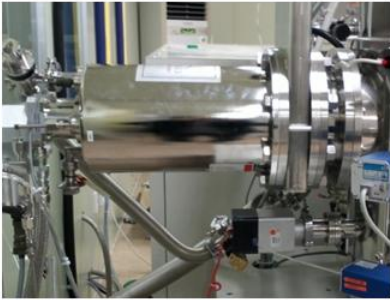
Two Chamber Type (Optional : One Chamber)

Material : SUS 304

Chamber internal shield cover
(Easy exchange type)

Specification

Vacuum pump

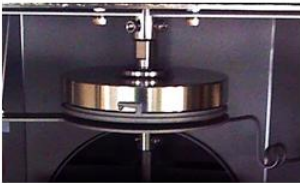


Turbo pump or Cryo Pump (Optional)

Rotary pump (Optional : Dry pump)

High Vacuum Gate Valve

Substrate



Sample Size : Piece ~ 6" Wafer (Etc Optional)

Sample Capacity : 6" Wafer 4 Sheets (Optional)

Single sample Rotation Type (One process)

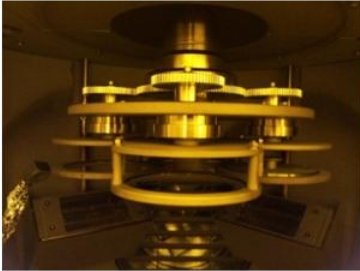
Multi sample Rotation Type (One process)

Rotation & Revolution Substrate (Optional)

Substrate Shutter

Rotation speed : 0 ~ 30 R.P.M

Revolution speed : 0 ~ 30 R.P.M



Thickness Monitor



Thickness Monitor or Controller (Optional)

Rate Monitoring or Rate Control type

Rate Resolution : Below than 0.1Å/Sec



Single or Dual sensor mount type
(Multi sensor : optional)

Specification

Thickness Monitor

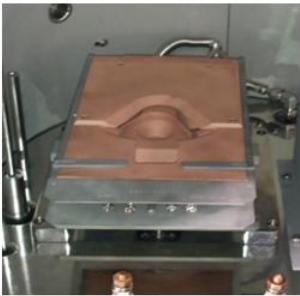


Co-deposition available (Optional)

Thickness sensor Shutter (Optional)

Supply Brand (Inficon or Sycon Brand)

E-Beam Source



Single Pocket ~ Multi Pocket (6 Pocket)

Crucible Size : 4cc ~40cc (Optional)

X-Y Sweep controller (Programmable : Optional)

Crucible Indexer (By Stepping motor)

E-Beam Power



Power Capacity : 3kW ~ 15kW (Optional)

High voltage, Water, Octal feedthrough

High voltage ; to fit 10kV

Supply Brand (Temescal)

Etc Brand (Optional)



Specification

Required Services

Main Power : 220V or 380V, 3 Phase, 75A

PCW (Water) : 2~3kgf/Cm²

Compressed Air : 5.5~6 Kgf/Cm²

N₂ Gas (Chamber Vent) : 1~2 Kgf/Cm²

Exhaust : Ø40 Flexible Hose

Remark

Chamber Ultimate Pressure (One Chamber type)
; Below than 2×10^{-7} Torr

Chamber Ultimate Pressure (Two Chamber type)
; Below than 10^{-8} Torr

Pumping speed (One Chamber type) : Below than 5×10^{-6} Torr
; Below than 3×10^{-6} Torr (Within 30 minute after sample loading)

Pumping speed (Two Chamber type)
; Below than 3×10^{-6} Torr (Within 10 minute after sample loading)

Film deposition Uniformity : Below than $\pm 5\%$

Provides operating & maintenance manual

Training

Warranty : 1 Year (Exclude consumables parts)
